

the Cutting Edge

NEWSLETTER OF THE CENTRAL TEXAS WOODCARVERS ASSOCIATION

CTWA STAFF 2003

- President**
Buddy Streetman..... 453-4087
- Vice President**
Bob Reese..... 515-5600
- Secretary**
Shirley Newman..... 259-2325
- Treasurer**
Gail Lynn..... 835-6643
- Blank Master**
Sue Sweeney..... 454-0520
- Librarian**
David Hickey..... 258-2310
- Raffle Master**
Tom Sarff..... 282-4100
- Sharpening Master**
Bill Buckler..... 255-9507
- Tape Master**
Larry Crook..... 834-8011
- Newsletter**
David Loeffler..... 335-7354
e-mail: loeffler@onr.com

Advisory Board

- Jim Roby..... `02
John Thompson..... `01
Jake Heugel..... `00
Ronnie Reed..... `99

December Blank of the Month

Tom Sarff



Jake Heugel's Majestic Elk



A Word from the Editor

by David Loeffler



Planning has started on the Holiday Party next month. See Jo Cage if you would like to help.

December is election time. See the slate of candidates in Shirley's column on page 3.

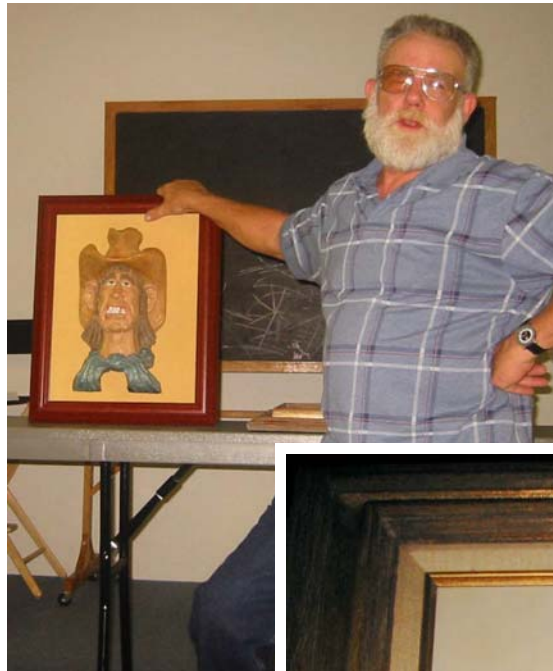
See you all at the Tuesday meeting.

Check out the club website for the color version of the newsletter.
<http://www.onr.com/ctwa>

**Next Meeting is Tuesday, Dec 9th at 7 PM at
St. Barnabas Church.**

Doors open at 6:30. If you need directions call one of the officers or visit the club website (<http://www.onr.com/ctwa>).

More November Show and Tell



Tom Sarff and his Cowboy



Buddy Streeman's Dolphin



Diann Small's Rose

Reece's Pieces for the Novice

By Bob Reese



Acrylics have the advantage of drying quickly. They are readily available in a variety of colors. They can be mixed easily and offer easy cleanup. Use good quality artists brushes—the best you can afford. I use both flat and round brushes of various sizes. No. 2/0 Round and No. 2 ultra-round are two small brushes that are good for detail painting and for painting in small areas.

Source: Gary Batte's file on Finishing Woodcarvings

Secretary's Notes

by **Shirley Newman**
November 11, 2003 Meeting



As usual, we had a great group of wood carvers at our November monthly meeting. We were all home folks, however, with no visitors present.

President, **Buddy Streetman**, introduced two items for discussion by our group. First was our annual holiday party, which has been held in January the past few years. A motion was made and seconded, and by vote of those present it was decided that we will again hold the party in January when the pace slows after all the December activities. So plan now to be a part of this fun night the second Tuesday in January! **Jo Cage** has agreed to head up this event once again, with the help of some trusty volunteers, so it is sure to be a huge success!!

The second item of business was nomination of officers for 2004. Nominees are as follows:

- **Buddy Streetman**, President
- **Bob Reese**, Vice President
- **Shirley Newman**, Secretary
- **Gail Lynn**, Treasurer

Election of officers will be held at our **December 9** meeting. In addition to these nominees, nominations from the floor for the above offices will also be accepted prior to voting.

Gail Lynn gave a treasurer's report stating that we have \$1800 in our bank account. She also reminded us that dues for 2004 are now being accepted.

Show and tell time was a bit light on quantity, but the quality of work shown was outstanding. **Tom Sarff** had carved a cowboy head complete with cowboy hat, which was hollowed out, mounted and framed. Tom said there was a light inside the carving which shines through the eyes, teeth etc., however, for lack of batteries we didn't get to see it glow. He did himself proud nonetheless.

Jake Heugel brought a majestic elk. Lots of detail work and time went in to carving, painting and mounting this piece, and it was most impressive.

Buddy Streetman shared a bottleneck dolphin he is power carving from a piece of walnut. We'll look forward to seeing the finished product soon, Buddy.

Diann Small brought a lovely wood burned and framed rose which she did in Nedra's class in Fredericksburg.

As usual, we had a lively raffle, followed by painting tips offered by **Bob Reese**.

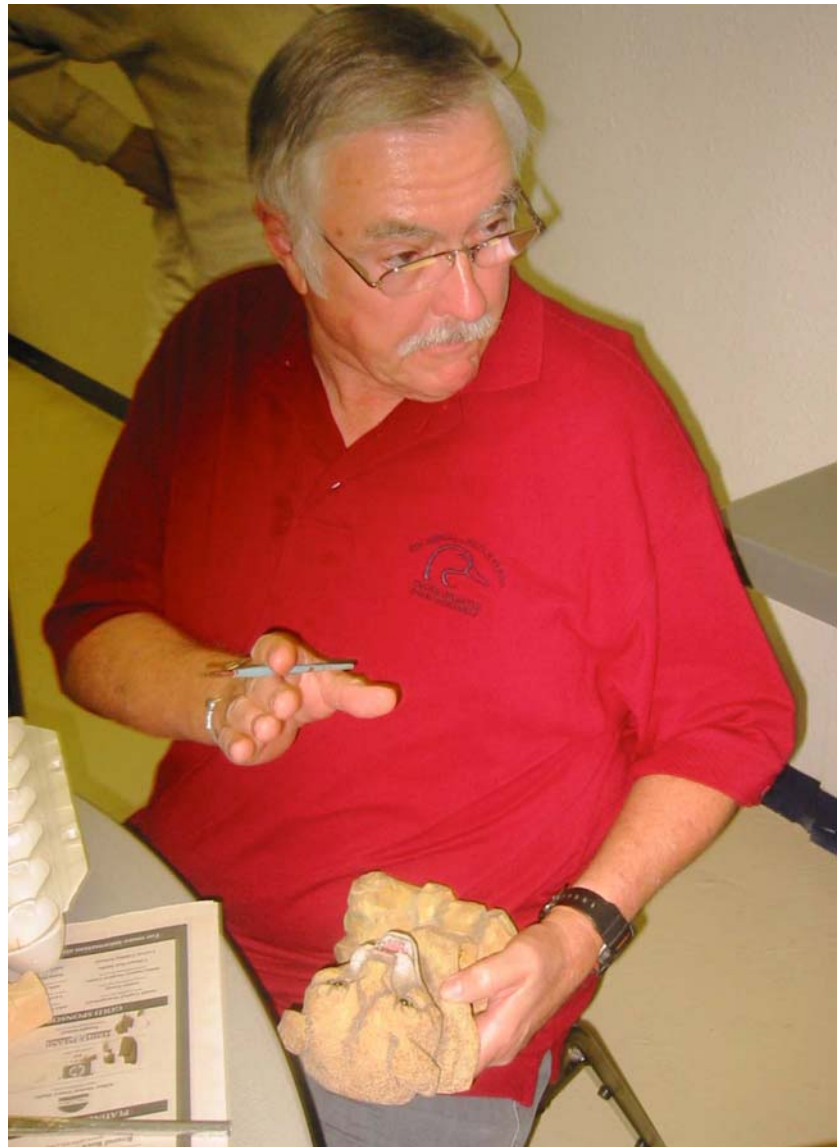
Now, where do YOU plan to be the evening of December 9th? Hopefully, you will be at our monthly meeting for another great evening with wood carving buddies. See you then.

For Sale

3 - metal tool stands, adjustable heights, \$20.00 each.

Wiley W. Bell (512)258-6399

Bob Reese the master painter



State Carving Events

If you know of any events, please contact David Loeffler <loeffler@onr.com>. This includes any classes members are teaching, carving shows, or any other types of events carvers are interested in.

MEMBERSHIP APPLICATION

Central Texas Woodcarvers Association

Annual Membership is \$12.00 for adults and \$5.00 for young people under 18 years of age. During the year, new adult members dues are prorated at \$1.00 per month.

Name _____ Spouse's Name _____

Street _____ City _____ State ____ Zip _____

Phone _____ Fax _____ E-mail _____

Mail to Gail Lynn, 11906 Rickem Cove, Austin, TX 78758
gaillynn@austin.rr.com

